

Timber / Steel truss framed roof construction.

Sisalation to roof to be fixed taut to provide backing to Sealection 500

Sealection 500 applied between truss top chords prior to plasterboard ceiling installation.

Provide blocking members trusses to form backing for Sealection 500.

Cavity brick wall construction.

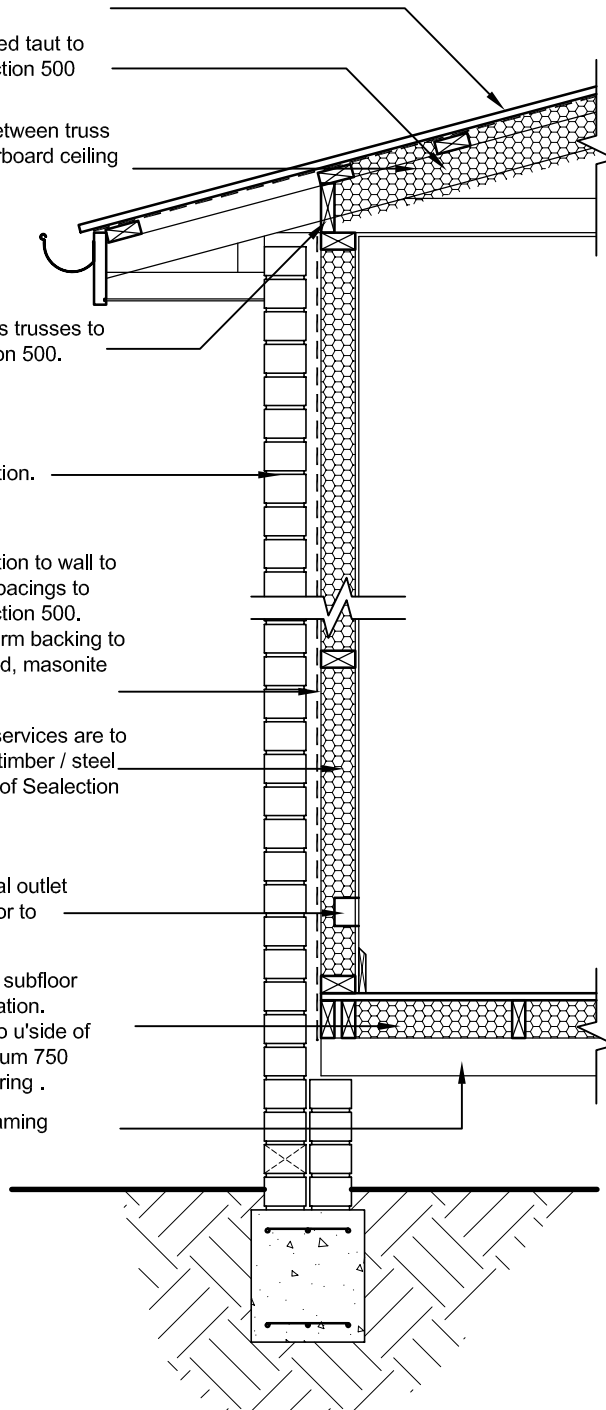
Vapour permeable sisalation to wall to be fixed taut @ 150mm spacings to provide backing to Sealection 500. Alternative materials to form backing to frame can include plywood, masonite & cement sheet.

All plumbing & electrical services are to be 'roughed in' & fixed to timber / steel frame prior to application of Sealection 500.

Provide enclosed electrical outlet boxes fixed to framing prior to insulation installation.

Sealection 500 applied to subfloor after sheet flooring installation. Minimum 450 clearance to u'side of lowest framing and minimum 750 clearance to u'side of flooring .

Timber / Steel subfloor framing



Timber / Steel subfloor & masonry veneer construction

Scale 1:20