

Timber / Steel framed roof construction.

Sisalation to roof to be fixed taut to provide backing to Sealection 500

Sealection 500 applied between roof structure prior to plasterboard ceiling installation & mechanical services ductwork.

Provide blocking members between roof structure to form backing for Sealection 500.

Weatherboard / timber board & batten / cement sheet / metal & timber cladding construction fixed to timber / steel frame.

Vapour permeable sisalation to wall to be fixed taut @ 150mm spacings to provide backing to Sealection 500. Alternative materials to form backing to frame can include plywood, masonite & cement sheet.

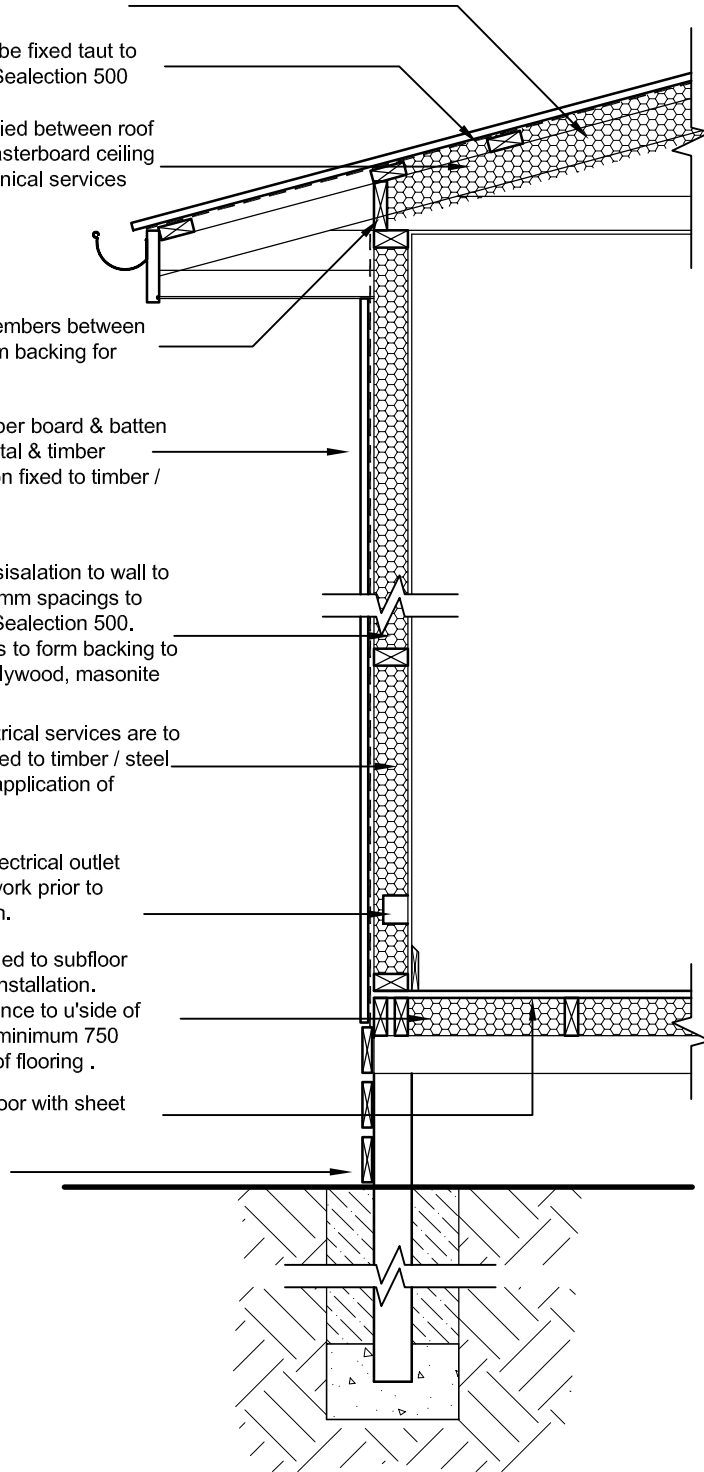
All plumbing & electrical services are to be 'roughed in' & fixed to timber / steel stud frame prior to application of Sealection 500.

Provide enclosed electrical outlet boxes fixed to studwork prior to insulation installation.

Sealection 500 applied to subfloor after sheet flooring installation. Minimum 450 clearance to u'side of lowest framing and minimum 750 clearance to u'side of flooring .

Timber / Steel subfloor with sheet flooring over.

Base boards



## Timber / Steel subfloor & lightweight cladding construction

Scale 1:20